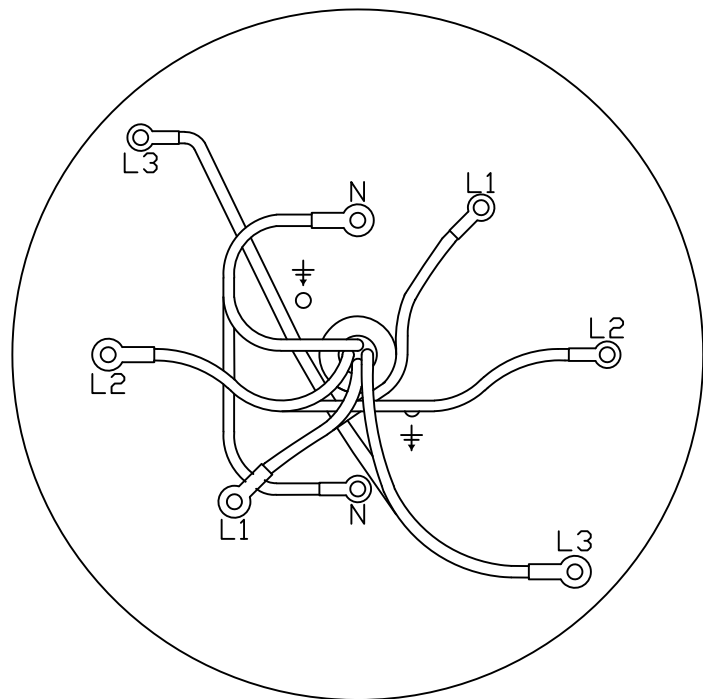
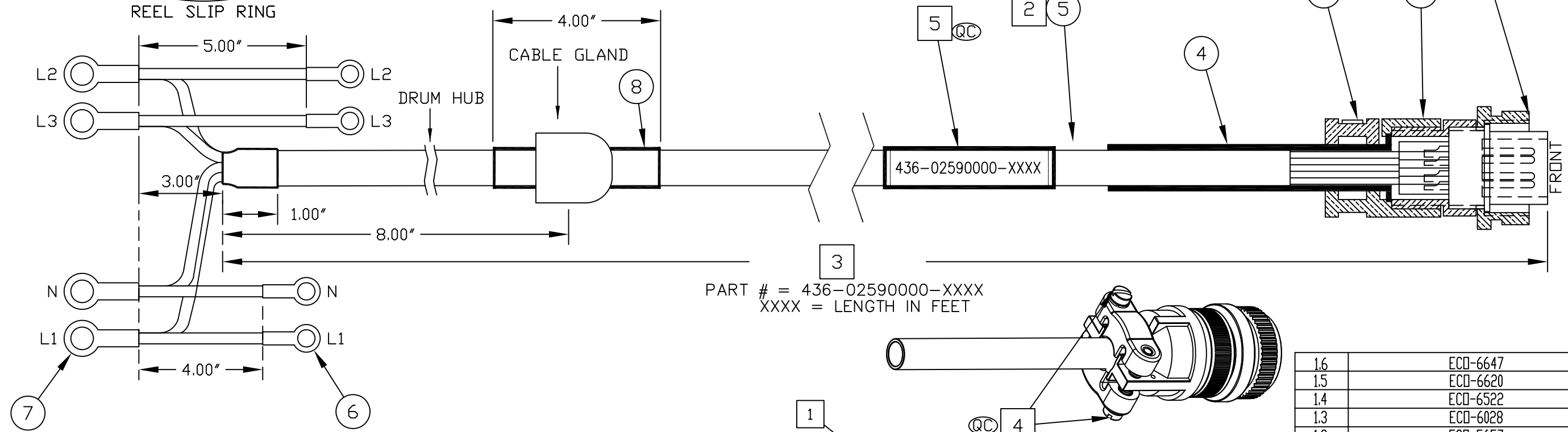
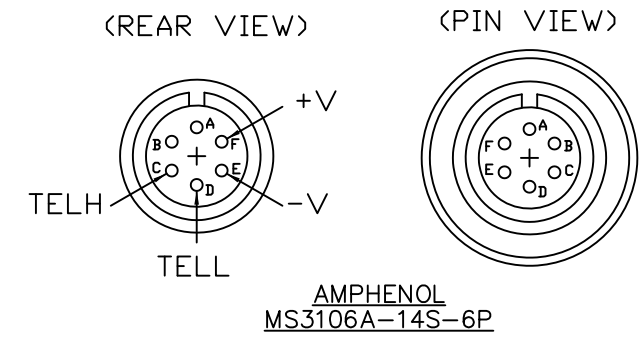


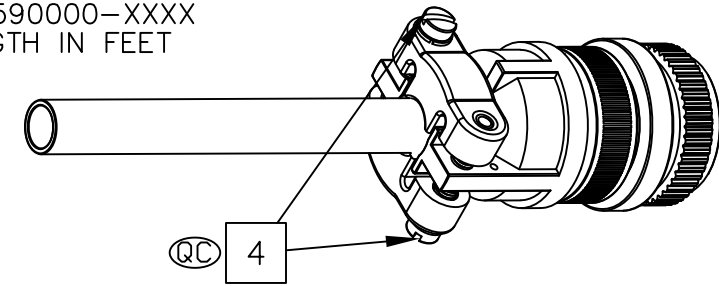
THIS COPY WILL BE UNCONTROLLED WHEN PRINTED



REEL SLIP RING TO AMPHENOL MS3106A-14S-3P				
REEL SLIP RING	SIGNAL	SEACON 18/4SDSH WHIP		AMPHENOL MS3106A-14S-6P
PIN #	DESC	COLOR	DESC	PIN #
L2	TELH	GRN	18AWG	C
L3	TELL	WHT	18AWG	D
N	V-	BLK	18AWG	E
L1	V+	RED	18AWG	F
N/A	N/C	N/A	N/C	A
N/A	N/C	N/A	N/C	B



PART # = 436-02590000-XXXX
XXXX = LENGTH IN FEET



CABLE AND WIRE LENGTH TOLERANCE		APPROVALS	NAME	DATE
≤1 FT	+1 IN -0 IN	DRAWN	BH	2012-JUL-17
>1 FT-5 FT	+2 IN -0 IN	REVISED	DM	2023-NOV-21
>5 FT-10 FT	+4 IN -0 IN	ENGR		
>10 FT-25 FT	+6 IN -0 IN	CHECKED		
>25 FT	+5% -0%	PROD		
		QA		
		ISSUED		
DO NOT SCALE DRAWING. CONFIDENTIAL. DO NOT COPY.				

ISS	DESCRIPTION	DATE
1.6	ECD-6647	2023-NOV-21
1.5	ECD-6620	2023-AUG-08
1.4	ECD-6522	2023-JAN-31
1.3	ECD-6028	2017-JAN-11
1.2	ECD-5657	2016-APR-28
1.1	ECD-5242	2014-FEB-18

- NOTES:**
- ALL PARTS AND PROCESSES USED ON THIS ASSEMBLY MUST COMPLY WITH THE RoHS DIRECTIVE
 - 1 FOR TOLERANCES PLEASE REFER TO THE TABLE.
 - 2 CABLE MINIMUM BEND RADIUS = 5"
 - 3 THE LAST 4 DIGITS OF THE PART NUMBER STATES THE LENGTH OF THE CABLE IN FEET.
 - 4 TIGHTEN THE SCREWS WITH TORQUE SCREW DRIVER SET AT 5Nm
 - 5 BEFORE INSTALLING THE CONNECTOR:
PRINT PART# USING 1/8" BLACK TEXT ON WHITE, THEN COVER WITH CLEAR HEATSHRINK.
 - QC IMPORTANT TO CHECK.

REVISIONS

Kongsberg Discovery Canada Ltd.

CABLE ASSEMBLY
REEL DECK CABLE

SIZE			DWG. NO.	ISS
B			436-02591000	1.6
SCALE: NTS	W.D. NO.		SHEET 1 OF 1	

PROPRIETARY NOTICE
 THIS DOCUMENT CONTAINS INFORMATION WHICH IS SOLE PROPERTY OF KONGSBERG DISCOVERY CANADA LTD AND IS
 RECEIVED IN CONFIDENCE. ITS CONTENTS MAY NOT BE DISCLOSED OR REPRODUCED IN ANY WAY WITHOUT
 WRITTEN CONSENT OF KONGSBERG DISCOVERY CANADA LTD.