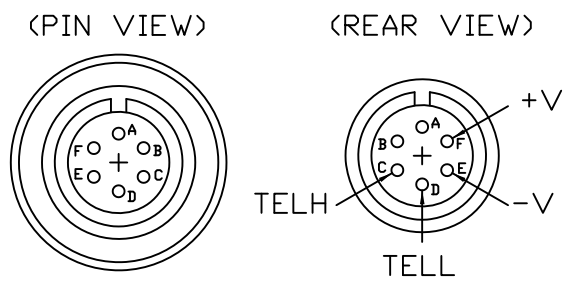
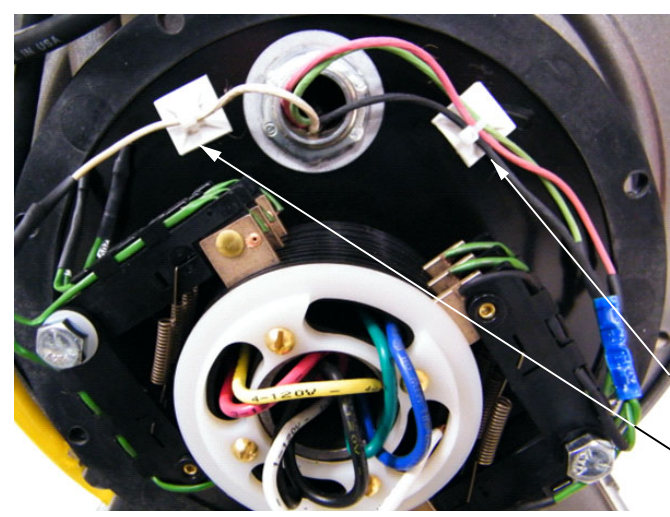


THIS COPY WILL BE UNCONTROLLED WHEN PRINTED

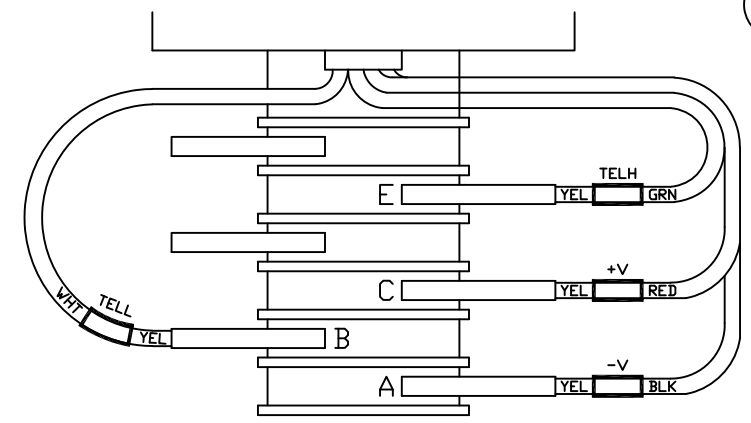
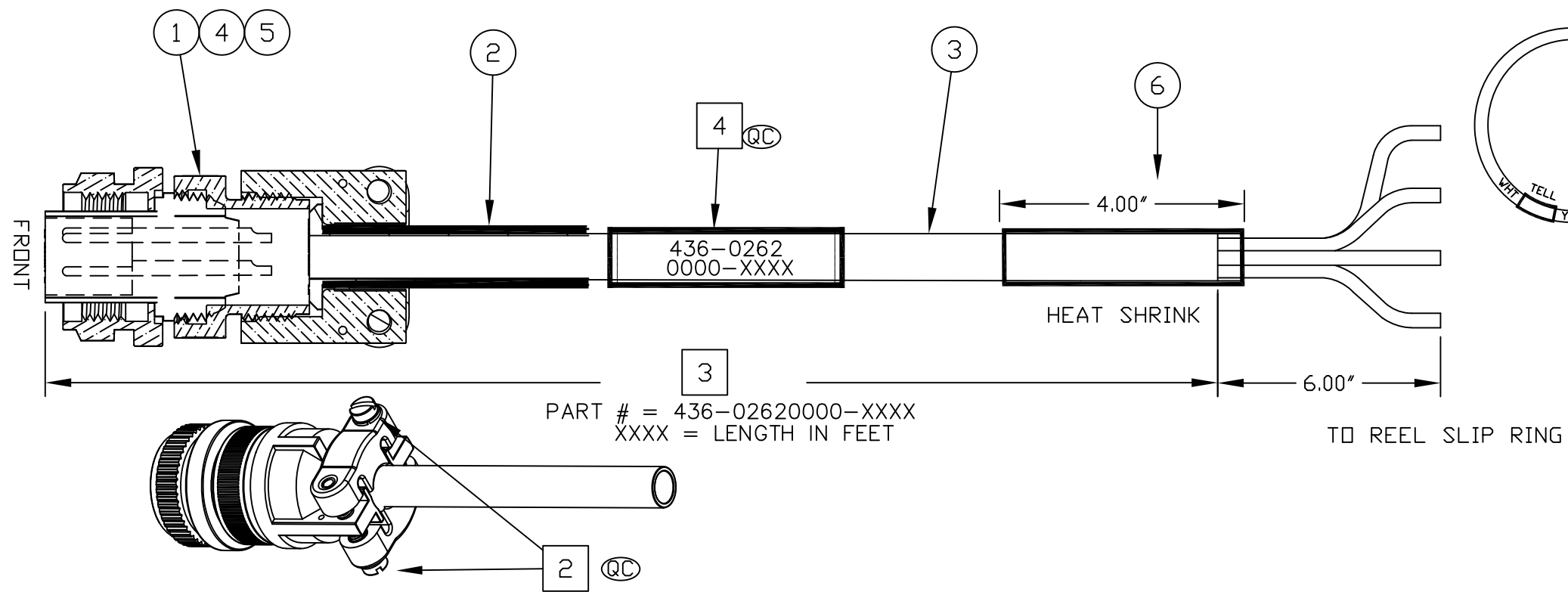


AMPHENOL  
MS3106A-14S-6P

AMPHENOL MS3106A-14S-3P TO SLIP RING				
AMPHENOL MS3106-14S-3P	SIGNAL	4C 18AWG CABLE		SLIP RING
PIN #	DESC	COLOR	DESC	PIN #
A	N/A	N/A	N/A	N/A
B	N/A	N/A	N/A	N/A
C	TELH	GRN	18AWG	E
D	TELL	WHT	18AWG	B
E	V-	BLK	18AWG	A
F	V+	RED	18AWG	C



ITEMS ON THE TOP LEVEL



- NOTES:**  
ALL PARTS AND PROCESSES USED ON THIS ASSEMBLY MUST COMPLY WITH THE RoHS DIRECTIVE
- 1 FOR TOLERANCES PLEASE REFER TO THE TABLE.
  - 2 TIGHTEN THE SCREWS WITH TORQUE SCREW DRIVER SET AT 5Nm
  - 3 THE LAST 4 DIGITS OF THE PART NUMBER STATES THE LENGTH OF THE CABLE IN FEET
  - 4 BEFORE INSTALLING THE CONNECTOR:  
PRINT PART# USING 1/8" BLACK TEXT ON WHITE, THEN COVER WITH CLEAR HEATSHRINK.
- QC IMPORTANT TO CHECK.

CABLE AND WIRE LENGTH TOLERANCE		APPROVALS	NAME	DATE
≤1 FT	+1 IN -0 IN	DRAWN	DM	2016-NOV-30
>1 FT-5 FT	+2 IN -0 IN	REVISED	DM	2023-NOV-21
>5 FT-10 FT	+4 IN -0 IN	ENGR		
>10 FT-25 FT	+6 IN -0 IN	CHECKED		
>25 FT	+5% -0%	PRD		
		QA		
		ISSUED		

DO NOT SCALE DRAWING.  
CONFIDENTIAL. DO NOT COPY.

ISS	DESCRIPTION	DATE
1.6	ECD-6647	2023-NOV-21
1.5	ECD-6620	2023-AUG-08
1.4	ECD-6522	2023-JAN-30
1.3	ECD-6035	2016-NOV-30
1.2	ECD-5267	2014-MAR-19
1.1	ECD-5115	2013-APR-22

Kongsberg Discovery Canada Ltd.

CABLE ASSEMBLY  
REEL DECK CABLE 4 PIN

SIZE B	DWG. NO. 436-02621000	ISS 1.6
SCALE: NTS	W.D. NO.	SHEET 1 OF 1

PROPRIETARY NOTICE  
THIS DOCUMENT CONTAINS INFORMATION WHICH IS SOLE PROPERTY OF KONGSBERG DISCOVERY CANADA LTD AND IS RECEIVED IN CONFIDENCE. ITS CONTENTS MAY NOT BE DISCLOSED OR REPRODUCED IN ANY WAY WITHOUT WRITTEN CONSENT OF KONGSBERG DISCOVERY CANADA LTD.