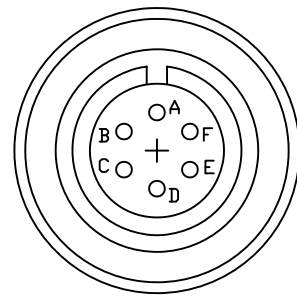
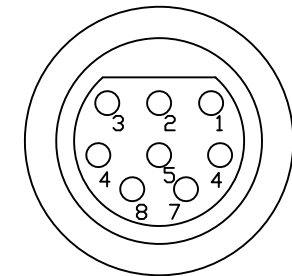


THIS COPY WILL BE UNCONTROLLED WHEN PRINTED

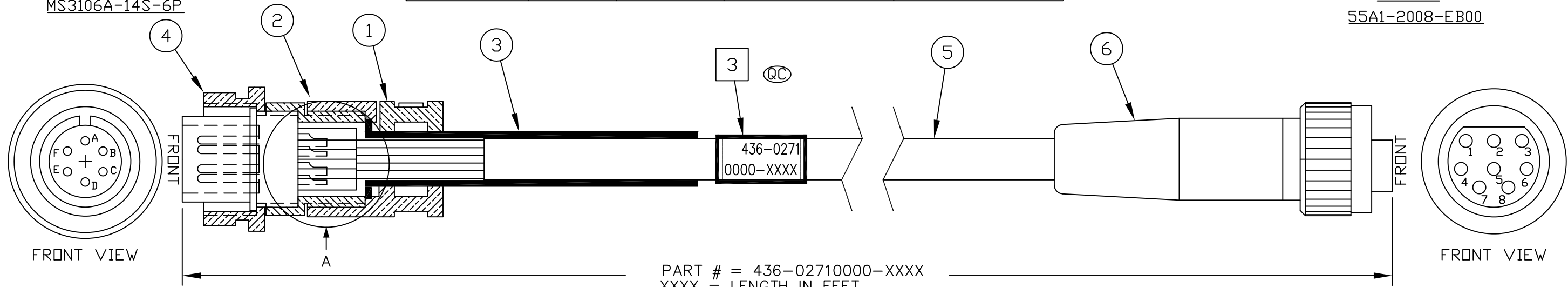
AMPHENOL MS3106A-14S-6P TO BURTON 55A1-2008-EB00				
AMPHENOL MS3106A-14S-6P	SIGNAL	CABLE		BURTON 55A1-2008-EB00
PIN #	DESC	COLOR	DESC	PIN #
A	SHIELD	DRAIN	N/C	1
C	TELH	BLK	TWISTED PAIR 2AWG	8
D	TELL	WHT		7
B	N/C	N/A	N/C	4
N/A	N/C	N/A	N/A	5
N/A	N/C	N/A	N/A	6
F	V+	RED	14AWG	4
E	V-	BLK	14AWG	1



REAR VIEW
AMPHENOL
MS3106A-14S-6P

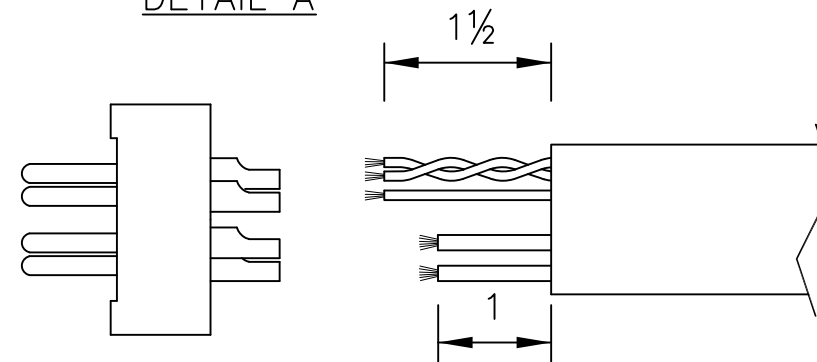
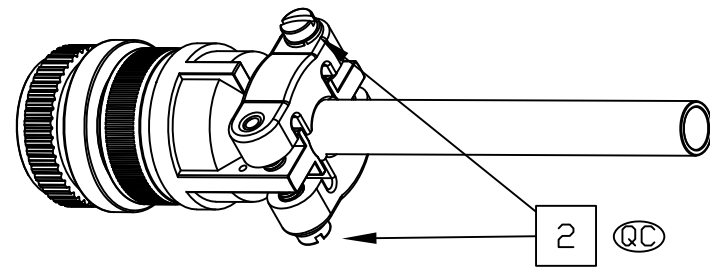


REAR VIEW
BURTON
55A1-2008-EB00



PART # = 436-02710000-XXXX
XXXX = LENGTH IN FEET

DETAIL A



NOTES:

ALL PARTS AND PROCESSES USED ON THIS ASSEMBLY MUST COMPLY WITH THE RoHS DIRECTIVE

- 1 FOR TOLERANCES PLEASE REFER TO THE TABLE.
- 2 TIGHTEN THE SCREWS WITH TORQUE SCREW DRIVER SET AT 5Nm
- 3 BEFORE INSTALLING THE CONNECTOR:
PRINT PART# USING 1/8" BLACK TEXT ON WHITE, THEN COVER WITH CLEAR HEATSHRINK.
- QC IMPORTANT TO CHECK.

CABLE AND WIRE LENGTH TOLERANCE		APPROVALS	NAME	DATE
≤1 FT	+1 IN -0 IN	DRAWN	BH	2013-MAY-07
>1 FT-5 FT	+2 IN -0 IN	REVISD	DM	2023-NOV-21
>5 FT-10 FT	+4 IN -0 IN	ENGR		
>10 FT-25 FT	+6 IN -0 IN	CHECKED		
>25 FT	+5% -0%	PRDD		
		QA		
		ISSUED		
DO NOT SCALE DRAWING. CONFIDENTIAL. DO NOT COPY.				

ISS	DESCRIPTION	DATE
1.5	ECD-6647	2023-NOV-21
1.4	ECD-6620	2023-AUG-08
1.3	ECD-6522	2023-JAN-30
1.2	ECD-5578	2015-NOV-28
1.1	ECD-5449	2015-JAN-16

Kongsberg Discovery Canada Ltd.

CABLE ASSEMBLY
DE10-102/103 ROTATOR

SIZE B		DWG. NO. 436-02711000	ISS 1.5
SCALE: NTS	W.D. NO.	SHEET 1 OF 1	

PROPRIETARY NOTICE
THIS DOCUMENT CONTAINS INFORMATION WHICH IS SOLE PROPERTY OF KONGSBERG DISCOVERY CANADA LTD AND IS RECEIVED IN CONFIDENCE. ITS CONTENTS MAY NOT BE DISCLOSED OR REPRODUCED IN ANY WAY WITHOUT WRITTEN CONSENT OF KONGSBERG DISCOVERY CANADA LTD.