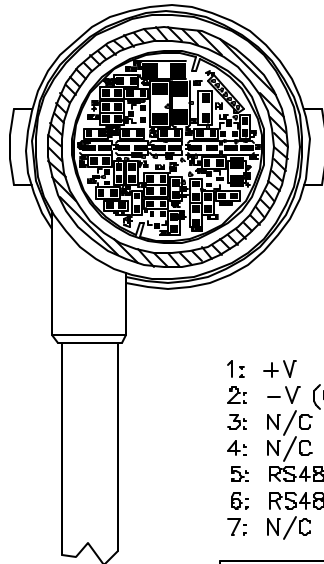
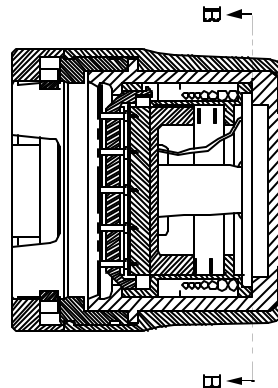


PROPRIETARY NOTICE - THIS DOCUMENT CONTAINS INFORMATION WHICH IS SOLE PROPERTY OF KONGSBERG SIMRAD MESOTECH LTD AND IS RECEIVED IN CONFIDENCE. ITS CONTENTS MAY NOT BE DISCLOSED OR REPRODUCED IN ANY WAY WITHOUT WRITTEN CONSENT OF KONGSBERG SIMRAD MESOTECH LTD.

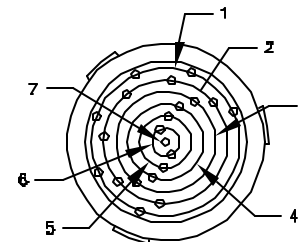
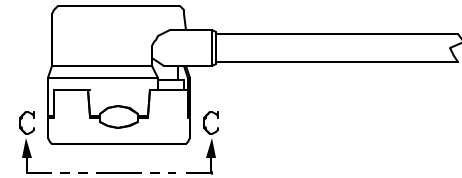
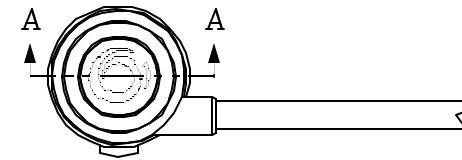
SECTION B-B



SECTION A-A



- 1: +V
- 2: -V (COM)
- 3: N/C
- 4: N/C
- 5: RS485- (232 UP)
- 6: RS485+ (232 DWN)
- 7: N/C



VIEW C-C

ZONE	ISS	DESCRIPTION	DATE	APPROVED
REVISIONS				

UNLESS OTHERWISE SPECIFIED DIMENSIONS ARE IN INCHES TOLERANCES ARE:		
DECIMALS	FRACTIONS	ANGLES
.XX ±0.006	±1/32	±30'
.XXX ±0.003		
SURFACE FINISH 125		
BREAK SHARP EDGES 0.010		
DE-BURR HOLES		
DO NOT SCALE DRAWING		

APPROVALS	DATE
DRAWN J.BANSER	31 JUL 02
CHECKED	
ENGR	
ISSUED	
NEXT ASSY	MODEL
CONFIDENTIAL DO NOT COPY	

Kongsberg Simrad Mesotech Ltd.

CONNECTOR - PLUG
ALSTOM - SEANET, 7 CONTACT
RS485/232 DIGITAL TELEMETRY

SIZE	NSCM NO	TYPE	DWG NO.	ISS
A	1C965	MD	442-00001442	1.0

SCALE: -	W.Q. NO.	SHEET 1 OF 1
----------	----------	--------------