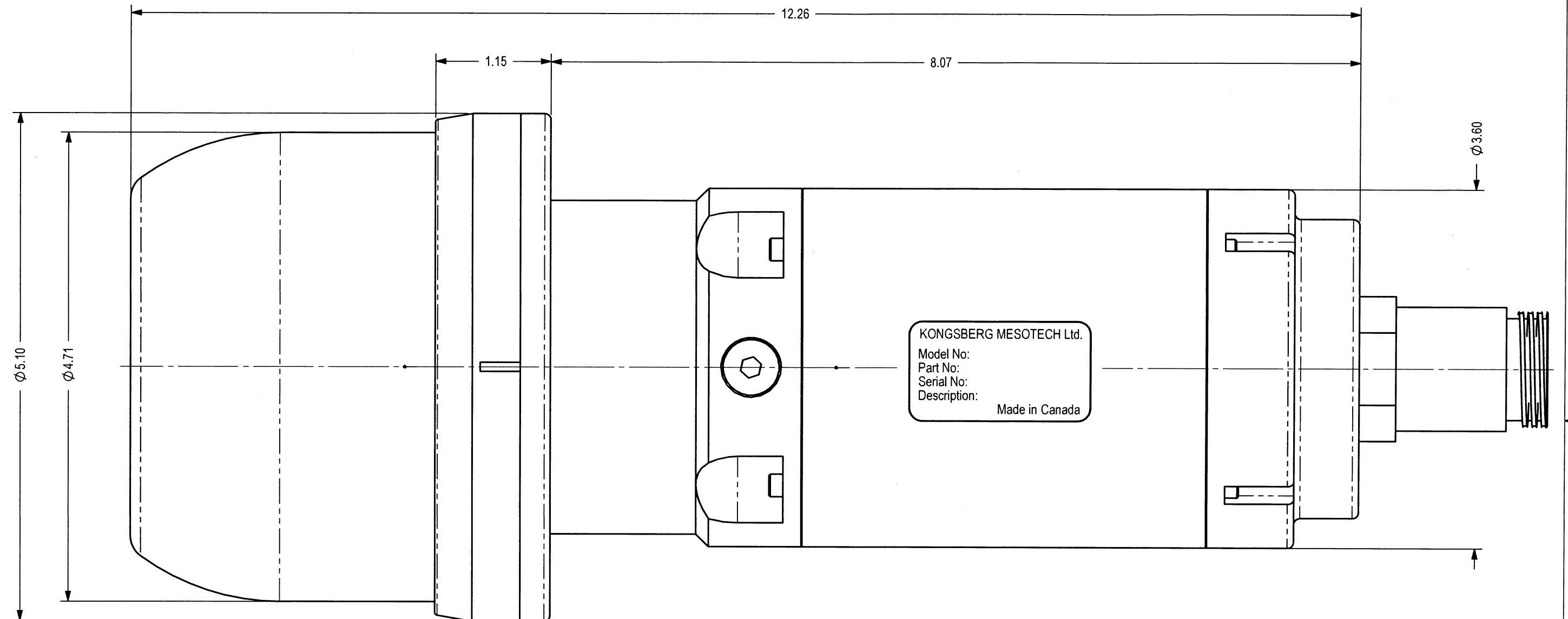


DWG. NO.	SHT	ISS
975-21301001	1	1.0

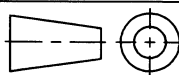


**NOTES:**

1. MAXIMUM OPERATING DEPTH: 4000msw / 13123fsw.
2. WEIGHT IN AIR: 9.5lbs / 4.3kg est.  
WEIGHT IN SEAWATER: 4.2lbs / 1.9kg est.
3. U/W CONNECTOR IS CUSTOMER SPECIFIED (SUBCONN DBCR2013M SHOWN)
4. DIMENSIONS IN INCHES.
5. DO NOT SCALE.

PROPRIETARY NOTICE  
 THIS DOCUMENT CONTAINS INFORMATION WHICH IS SOLE PROPERTY OF KONGSBERG MESOTECH LTD AND IS RECEIVED IN CONFIDENCE. ITS CONTENTS MAY NOT BE DISCLOSED OR REPRODUCED IN ANY WAY WITHOUT WRITTEN CONSENT OF KONGSBERG MESOTECH LTD.

CONFIDENTIAL. DO NOT COPY.  
 DO NOT SCALE DRAWING.



APPROVALS	NAME	DATE
DRAWN	DL	2017/09/21
REVISED	--	--
ENGR	DL	2017/11/27
CHECKED	DM	Nov 27 / 2017
PROD	DL	Nov 27 / 2017
QA	KJ	28-Nov-17
ISSUED	ZM	Nov 28 / 17

ISS	DESCRIPTION	DATE
REVISIONS		
	<b>Kongsberg Mesotech Ltd.</b>	
	<b>OUTLINE AND INSTALLATION DRAWING</b>	
	<b>1171 IMAGER, MULTI FREQUENCY</b>	
SIZE	NSCM NO	TYPE
B	1C965	MD
DWG. NO.	975-21301001	
ISS	1.0	
SCALE: 1:1	W.O. NO.	SHEET 1 OF 1