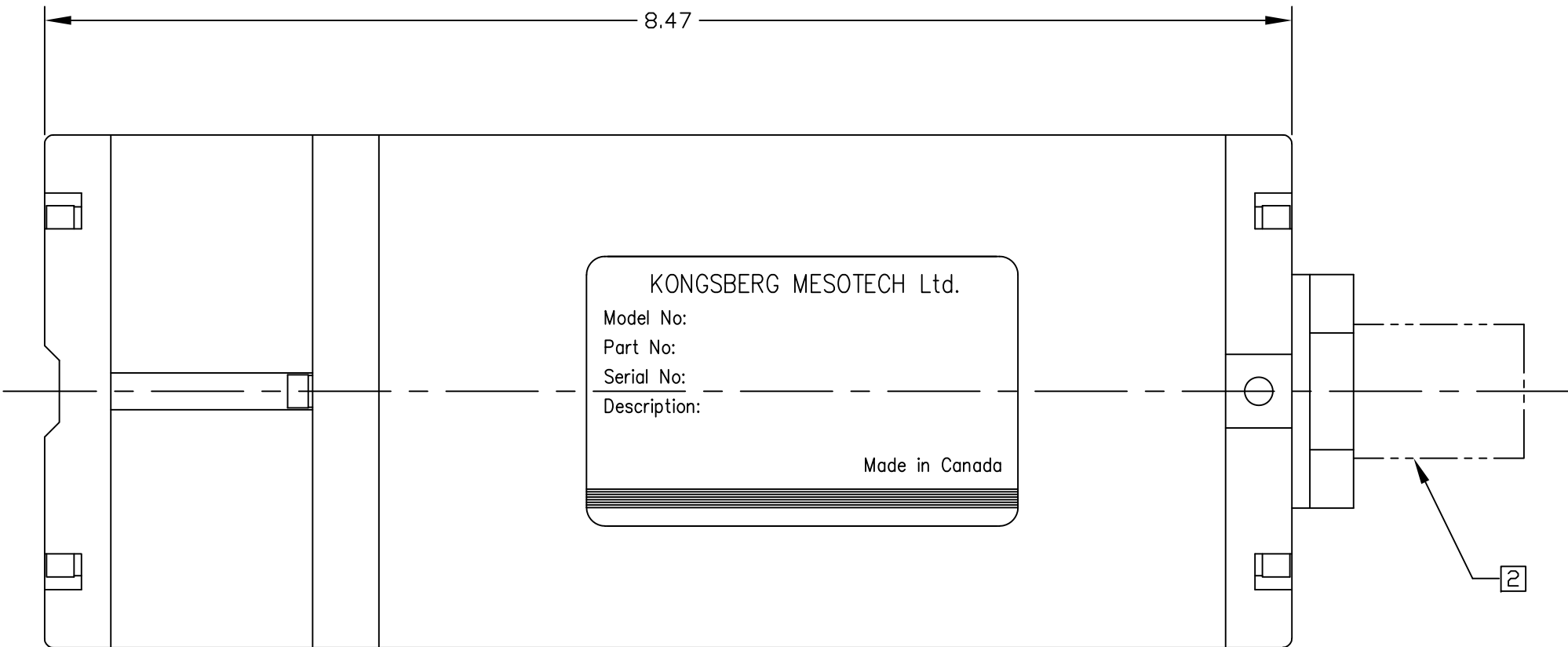
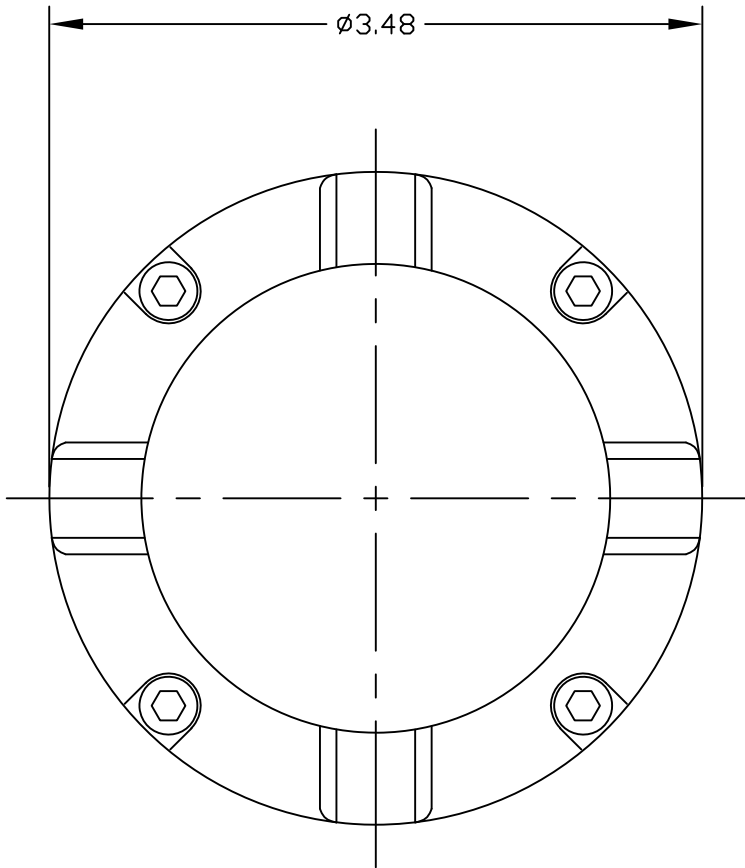


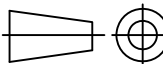
THIS COPY WILL BE UNCONTROLLED WHEN PRINTED  
DO NOT SCALE DRAWING.  
CONFIDENTIAL. DO NOT COPY



NOTES:

- 1 MAXIMUM OPERATING DEPTH: 6000msw / 19686fsw
- 2 U/W CONNECTOR IS CUSTOMER SPECIFIED
- 3 WEIGHT IN AIR: 7.5LB / 3.4KG  
- IN SEAWATER: 4.6LB / 2.1KG
- 4 DIMENSIONS IN INCHES
- 5 DIMENSIONS ARE NOMINAL
- 6 DO NOT SCALE

APPROVALS	NAME	DATE
DRAWN	DL	2021/03/10
REVISED	--	--
ENGR		
CHECKED		
PROD		
QA		
ISSUED		

ISS	DESCRIPTION	DATE
REVISIONS		
Kongsberg Mesotech Ltd.		
OUTLINE AND INSTALLATION DRAWING 6000m 120kHz 1107 ALTIMETER		
-		
SIZE B	 DWG. NO. 975-72211001	ISS 1.0
SCALE: NTS	W.D. NO.	SHEET 1 OF 1

PROPRIETARY NOTICE  
THIS DOCUMENT CONTAINS INFORMATION WHICH IS SOLE PROPERTY OF KONGSBERG MESOTECH LTD. AND IS  
RECEIVED IN CONFIDENCE. ITS CONTENTS MAY NOT BE DISCLOSED OR REPRODUCED IN ANY WAY WITHOUT  
WRITTEN CONSENT OF KONGSBERG MESOTECH LTD.