

1107 ALTIMETER



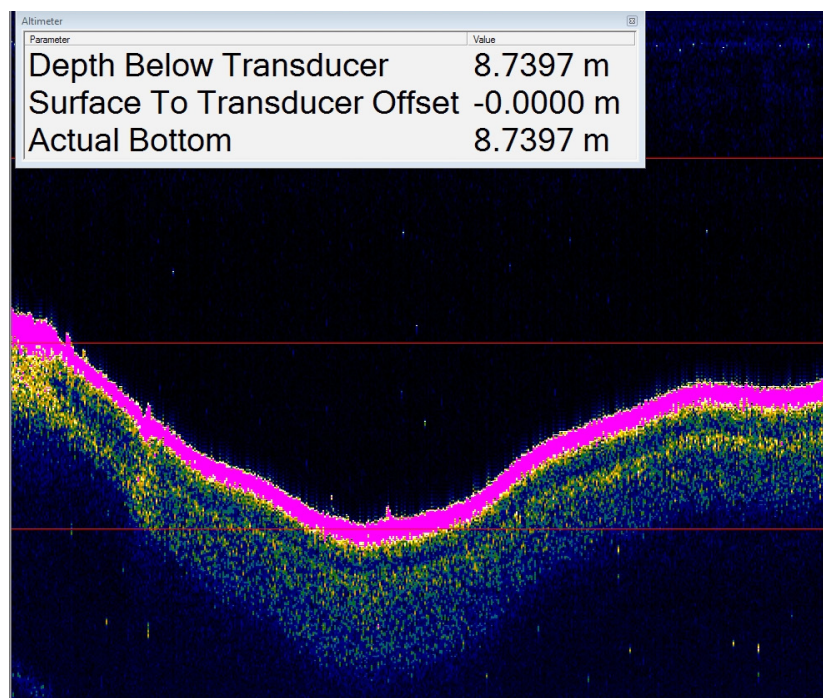
HIGH-RESOLUTION ALTIMETERS
FOR DEEP OCEAN APPLICATIONS

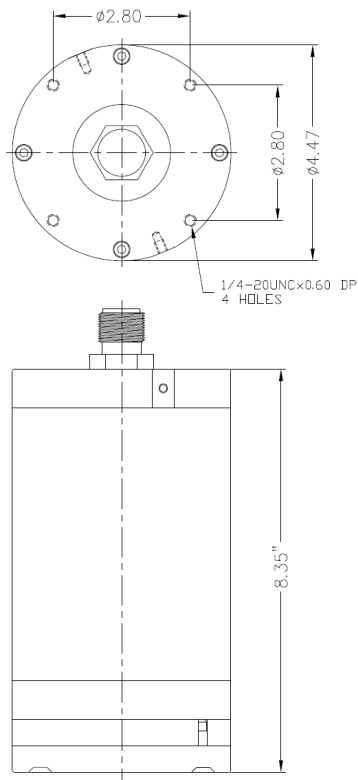
1107 SERIES ALTIMETERS P/N 975-71500000

An underwater or subsea altimeter is primarily used to measure the altitude (height) of an object above the seafloor. Kongsberg Mesotech's underwater altimeters are also suited to various other applications, including positioning, berthing, and below-surface monitoring. The underwater vehicle industry (ROVs and AUVs) is the primary user of altimeters.

HIGHLIGHTS

- Depth rating: 6000 m
- Robust design
- Small and lightweight
- NMEA DBT output
- Suitable for various applications, including positioning, berthing, height above seabed, and below-surface monitoring





DEFAULT CONFIGURATION

Output format:
NMEA DBT @ 9600 bps (809 mode)

Minimum range:
0.75 m (2.46 ft)

Maximum range:
100 m (328 ft)

Output resolution:
6.25 mm

Transmit Pulse length:
250 μ s

Repetition rate:
Affected by range and resolution
settings

Assumed speed of sound:
1475 m/s (4839 ft/s)

Serial interface:
RS232C

Downlink baud rate:
9600 bps

Uplink baud rate:
9600 bps

Aux. analog output:
Min - 0.037 V
Max - 4.88 V

TECHNICAL SPECIFICATIONS

Operating frequency	675 kHz
Operating depth	6000 m
Beam width	2.7° nominal
Minimum range	Between 0.3 m and 1.0 m, configurable, adjustable in 809 mode
Maximum range	Between 5 m and 110 m, configurable, adjustable in 809 mode
Output resolution	Between 2.4 mm and 25 mm (affected by mode and range settings)
Transmit Pulse length	100 μ s, 200 μ s or 250 μ s, adjustable in 809 mode
Repetition rate	Affected by range and resolution settings
Assumed speed of sound	Adjustable, 1400 to 1600 m/s
Operating mode	Configurable (807 mode, 808 mode, 809 mode, or MS1000 Software)
Serial interface	RS232C or RS485 (configurable in 809 mode, autodetected in MS1000 Software)
Receive bandwidth	28 kHz max.
Downlink baud rate	4800 bps (808 mode), 9600 bps (809 mode), adjustable in MS1000 Software
Uplink baud rate	4800 bps (808 mode), 9600 bps (809 mode), adjustable in MS1000 Software
Hold-off synchronization	Via serial command or TTL input
Aux. analog output	Configurable, 5 V or 10 V
Connector	Burton 5507-1508
Power requirements	+22 to +28 VDC @ 1.0 A startup, 250 mA continuous
Temperature range	-10 to +40°C operating, -30 to +50°C storage
Materials	Aluminium 6061-T6, 300-Series Stainless Steel, PVC, and Epoxy
Finish	Anodize, black MIL-A-8625 type 2
Dimensions	
Length	212 mm/8.35" (excludes connector)
Diameter	114 mm/4.47"
Weight (est.)	
in air	5.0 kg/11.0 lbs
in water	2.7 kg/6.0 lbs

Note: Use ALTCONFIG software to permanently change configurable settings.

Kongsberg Mesotech
1598 Kebet Way
Port Coquitlam, BC
Canada
V3C 5M5

Phone: 604-464-8144
Toll-Free: 1-888-464-1598
Fax: 604-941-5423

km.sales.vancouver@km.kongsberg.com