

1107 ALTIMETER



Connector is customer specified

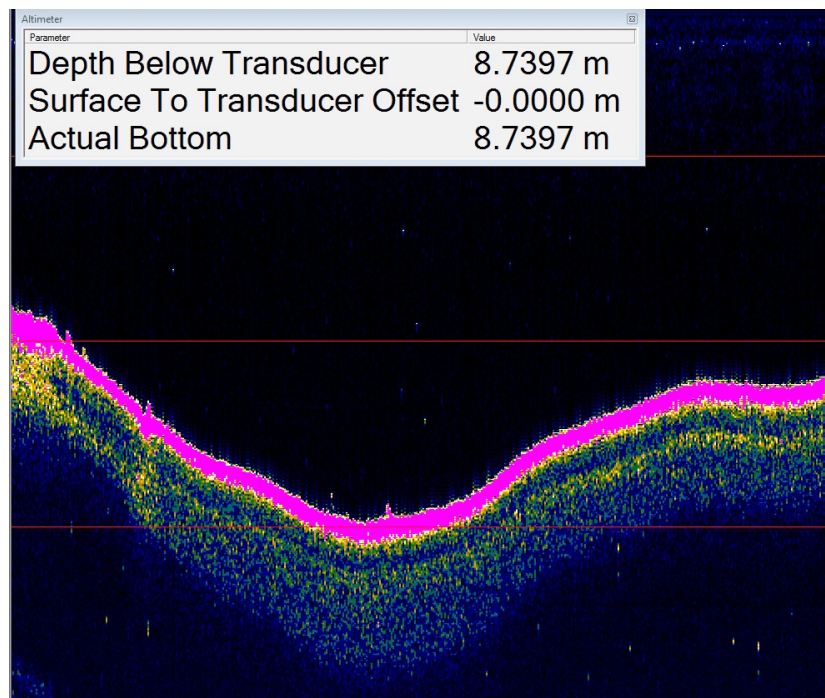
HIGH-RESOLUTION ALTIMETERS
FOR DEEP-OCEAN APPLICATIONS

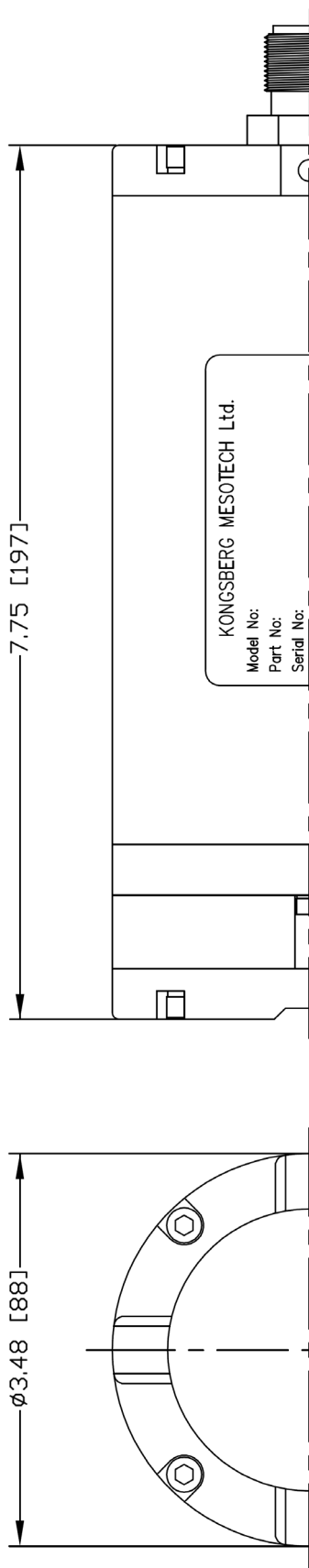
1107 SERIES ALTIMETERS P/N 975-72200000

An underwater or subsea altimeter is primarily used to measure the altitude (height) of an object above the seafloor. Kongsberg Mesotech's underwater altimeters are also suited to various other applications, including positioning, berthing, and below-surface monitoring. The underwater vehicle industry (ROVs and AUVs) is the primary user of altimeters.

HIGHLIGHTS

- Depth rating: 6000 m
- Robust design
- Small and lightweight
- NMEA DBT output
- Suitable for various applications, including positioning, berthing, height above seabed, and below-surface monitoring





TECHNICAL SPECIFICATIONS

Operating frequency	200 kHz
Operating depth	6000 m
Beam width	10° nominal
Minimum range	Adjustable, limited by pulse length
Maximum range	Adjustable, < 500 m, 300 m usable
Output resolution	Adjustable, > 2.4 mm
Transmit Pulse length	Adjustable, 20 to 1000 µs
Repetition rate	Adjustable, limited by range and resolution
Assumed speed of sound	Adjustable, 1400 to 1600 m/s
Operating mode	Configurable (807 mode, 809 mode or MS1000 Software v3.1 or higher)
Serial interface	RS232C or RS485 (configurable, autodetected in MS1000 Software)
Receive bandwidth	20 kHz max.
Downlink baud rate	9600 bps
Uplink baud rate	9600 bps, adjustable in MS1000 Software
Hold-off synchronization	Via serial command or TTL input
Aux. analog output	Configurable, 0-5 V or 0-10 V
Connector	Burton 5507-1508 Titanium
Power requirements	+22 to +28 VDC @ 1.0 A startup, 250 mA continuous
Temperature range	-10 to +40°C operating, -30 to +50°C storage
Materials	Titanium 6AL-4V (Body), Gr 2 (Fasteners), and Epoxy
Finish	None
Dimensions	
Length	197 mm/7.75" (excludes connector)
Diameter	88 mm/3.48"
Weight (est.)	
in air	3.3 kg/7.2 lbs
in water	1.9 kg/4.1 lbs

Note: Use ALTCONFIG software to permanently change configurable settings.

Kongsberg Mesotech
1598 Kebet Way
Port Coquitlam, BC
Canada
V3C 5M5

Phone: 604-464-8144
Toll-Free: 1-888-464-1598
Fax: 604-941-5423

km.sales.vancouver@km.kongsberg.com