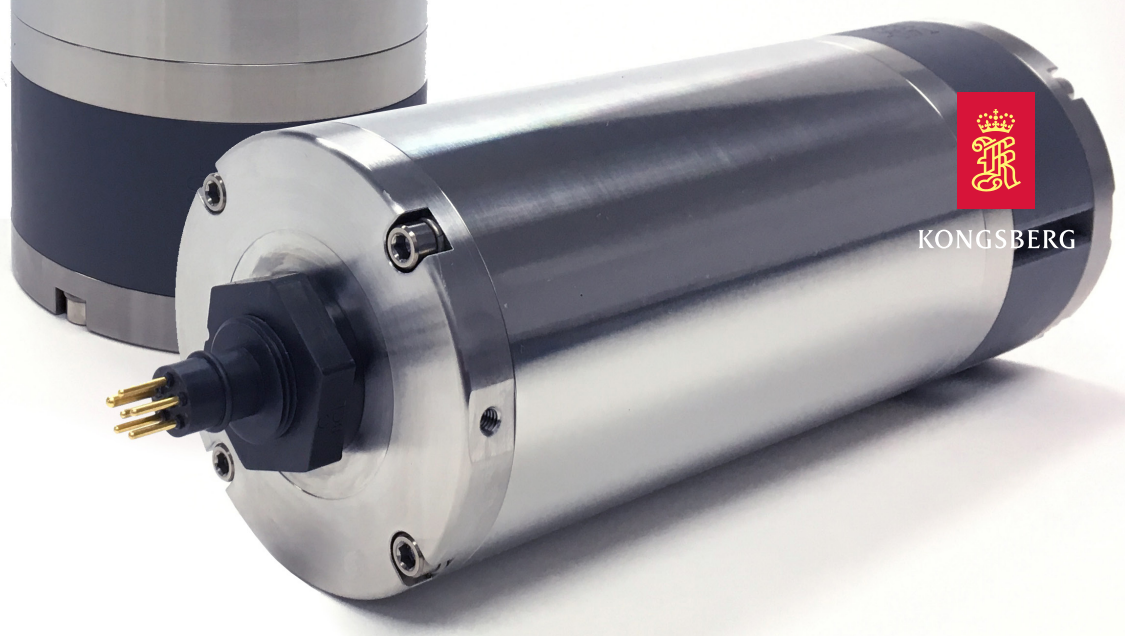


# 1107 ALTIMETER



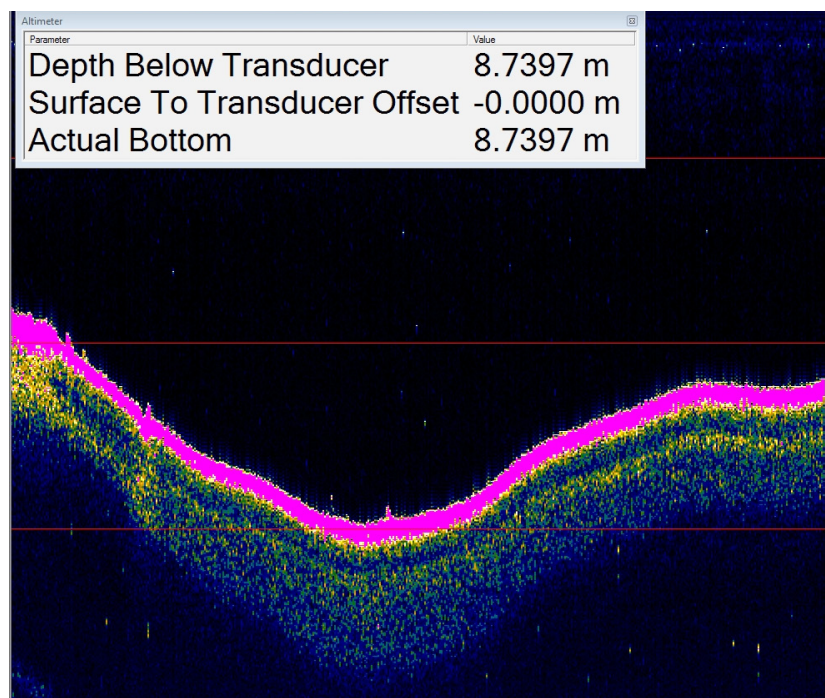
HIGH-RESOLUTION ALTIMETERS  
FOR DEEP OCEAN APPLICATIONS

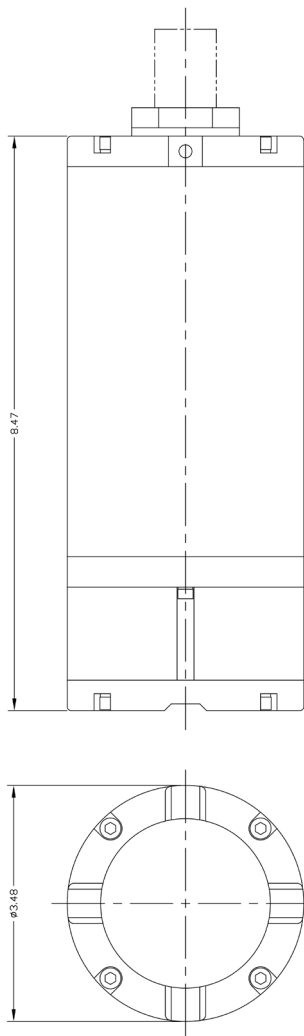
## 1107 SERIES ALTIMETERS P/N 975-72210000

An underwater or subsea altimeter is primarily used to measure the altitude (height) of an object above the seafloor. Kongsberg Mesotech's underwater altimeters are also suited to various other applications, including positioning, berthing, and below-surface monitoring. The underwater vehicle industry (ROVs and AUVs) is the primary user of altimeters.

### HIGHLIGHTS

- Depth rating: 6000 m
- Robust design
- Small and lightweight
- NMEA DBT output
- Suitable for various applications, including positioning, berthing, height above seabed, and below-surface monitoring





## DEFAULT CONFIGURATION

Output format:  
NMEA DBT @ 9600 bps (809 mode)

Minimum range:  
2.0 m

Maximum range:  
500 m

Output resolution:  
31.25 mm

Transmit Pulse length:  
500  $\mu$ s

Assumed speed of sound:  
1475 m/s (4839 ft/s)

Serial interface:  
RS232C

Downlink baud rate:  
9600 bps

Uplink baud rate:  
9600 bps

## TECHNICAL SPECIFICATIONS

Operating frequency	120 kHz
Operating depth	6000 m
Beam width	15° nominal
Minimum range	Limited by pulse length, adjustable
Maximum range	< 500 m, 300 m usable, adjustable
Output resolution	Between 2.4 mm and 31.25 mm (affected by mode and range settings)
Transmit Pulse length	100 $\mu$ s, 200 $\mu$ s, 250 $\mu$ s, or 500 $\mu$ s, adjustable
Repetition rate	Affected by range and resolution settings
Assumed speed of sound	1400 to 1600 m/s, adjustable
Operating mode	Configurable (808 mode, 809 mode, or MS1000 Software)
Serial interface	RS232C or RS485 (configurable in 809 mode, autodetected in MS1000 Software)
Receive bandwidth	12 kHz max.
Downlink baud rate	4800 bps (808 mode), 9600 bps (809 mode), adjustable in MS1000 Software
Uplink baud rate	4800 bps (808 mode), 9600 bps (809 mode), adjustable in MS1000 Software
Hold-off synchronization	Via serial command or TTL input
Connector	Seacon XSG-6-BCL
Power requirements	+22 to +28 VDC @ 1.0 A startup, 250 mA continuous
Temperature range	-10 to +40°C operating, -30 to +50°C storage
Materials	Titanium 6AL-4V (Body), Gr 2 (Fasteners), PVC, and Epoxy
Finish	None
Dimensions	
Length	215 mm/8.47" (excludes connector)
Diameter	88 mm/3.48"
Weight (est.)	
in air	3.4 kg/7.5 lbs
in water	2.0 kg/4.6 lbs

Note: Use ALTCONFIG software to permanently change configurable settings.

Kongsberg Mesotech  
1598 Kebet Way  
Port Coquitlam, BC  
Canada  
V3C 5M5

Phone: 604-464-8144  
Toll-Free: 1-888-464-1598  
Fax: 604-941-5423

km.sales.vancouver@km.kongsberg.com