

# 1107 ALTIMETER



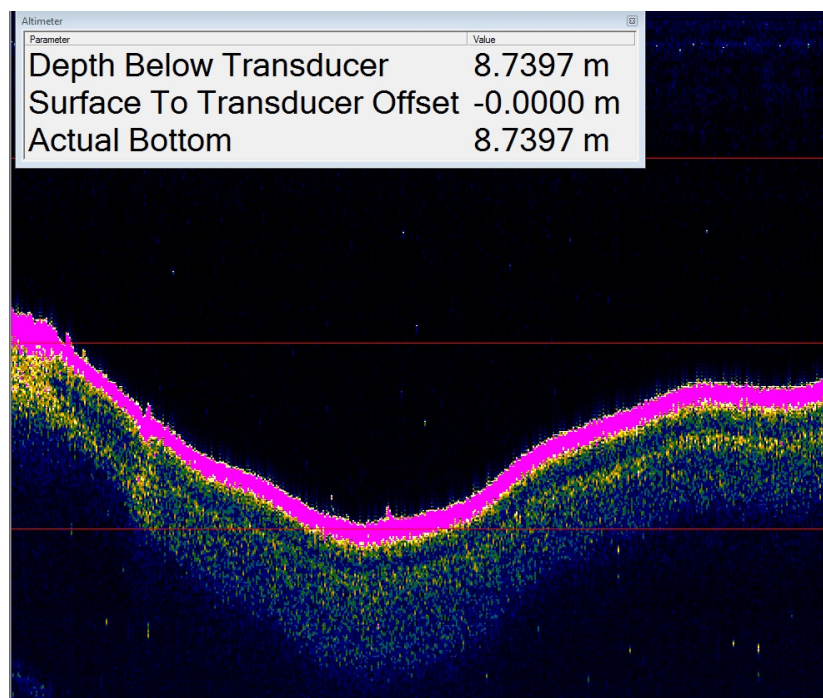
HIGH-RESOLUTION ALTIMETERS  
FOR DEEP OCEAN APPLICATIONS

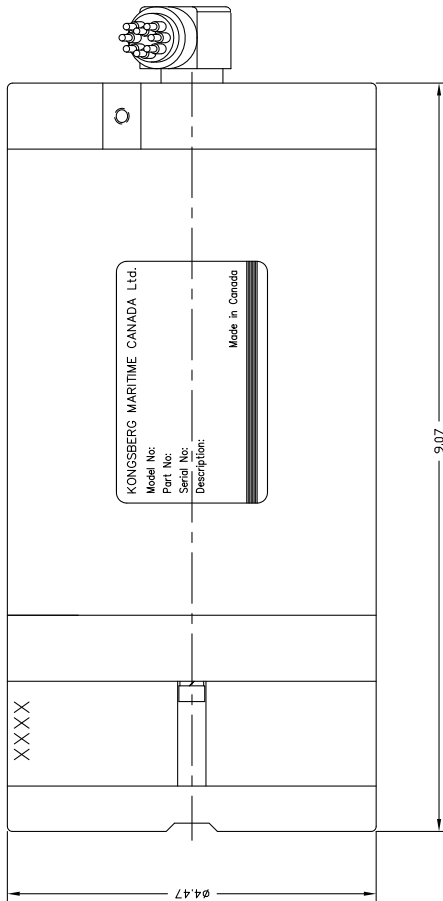
## 1107 SERIES ALTIMETERS P/N 975-72220000

An underwater or subsea altimeter is primarily used to measure the altitude (height) of an object above the seafloor. Kongsberg Mesotech's underwater altimeters are also suited to various other applications, including positioning, berthing, and below-surface monitoring. The underwater vehicle industry (ROVs and AUVs) is the primary user of altimeters.

### HIGHLIGHTS

- Depth rating: 6000 m
- Robust design
- Small and lightweight
- NMEA DBT output
- Suitable for various applications, including positioning, berthing, height above seabed, and below-surface monitoring





## DEFAULT CONFIGURATION

Output format:  
NMEA DBT @ 9600 bps (809 mode)

Minimum range:  
2.0 m

Maximum range:  
500 m

Output resolution:  
31.25 mm

Transmit Pulse length:  
500 µs

Assumed speed of sound:  
1475 m/s

Serial interface:  
RS232C

## TECHNICAL SPECIFICATIONS

Operating frequency	120 kHz
Operating depth	6000 m
Beam width	15° nominal
Minimum range	Adjustable, limited by pulse length
Maximum range	Adjustable, < 500 m, 300 m usable
Output resolution	Adjustable, > 2.4 mm
Transmit Pulse length	Adjustable, 20 to 1000 µs
Repetition rate	Limited by range and resolution
Assumed speed of sound	Adjustable, 1400 to 1600 m/s
Operating mode	Configurable (809 mode or MS1000 SW)
Serial interface	RS232C or RS485 (configurable in 809 mode, autodetected in MS1000 Software)
Receive bandwidth	12 kHz max.
Downlink baud rate	9600 bps
Uplink baud rate	9600 bps, adjustable in MS1000 Software
Hold-off synchronization	Via serial command or TTL input
Connector	Subconn MCBHRA8MSS
Power requirements	+22 to +28 VDC @ 1.0 A startup, 250 mA continuous
Temperature range	-10 to +40°C operating, -30 to +50°C storage
Materials	Aluminium 6061-T6, 300-Series Stainless Steel, PVC, and Epoxy
Finish	Anodize, black MIL-A-8625 type 2
Dimensions	
Length	230 mm/9.07" (excludes connector)
Diameter	114 mm/4.47"
Weight (est.)	
in air	5.2 kg/11.4 lbs
in water	2.8 kg/6.1 lbs

Note: Use ALTCONFIG software to permanently change configurable settings.



Kongsberg Mesotech  
1598 Kebet Way  
Port Coquitlam, BC  
Canada  
V3C 5M5

Phone: 604-464-8144  
Toll-Free: 1-888-464-1598  
Fax: 604-941-5423

km.sales.vancouver@km.kongsberg.com